

# many options

## for solution...

## PRODUCT CATALOGUE



Алматы (7273)495-231  
Ангарск (3955)60-70-56  
Архангельск (8182)63-90-72  
Астрахань (8512)99-46-04  
Барнаул (3852)73-04-60  
Белгород (4722)40-23-64  
Благовещенск (4162)22-76-07  
Брянск (4832)59-03-52  
Владивосток (423)249-28-31  
Владикавказ (8672)28-90-48  
Владимир (4922)49-43-18  
Волгоград (844)278-03-48  
Вологда (8172)26-41-59  
Воронеж (473)204-51-73  
Екатеринбург (343)384-55-89

Иваново (4932)77-34-06  
Ижевск (3412)26-03-58  
Иркутск (395)279-98-46  
Казань (843)206-01-48  
Калининград (4012)72-03-81  
Калуга (4842)92-23-67  
Кемерово (3842)65-04-62  
Киров (8332)68-02-04  
Коломна (4966)23-41-49  
Кострома (4942)77-07-48  
Краснодар (861)203-40-90  
Красноярск (391)204-63-61  
Курск (4712)77-13-04  
Курган (3522)50-90-47  
Липецк (4742)52-20-81

Магнитогорск (3519)55-03-13  
Москва (495)268-04-70  
Мурманск (8152)59-64-93  
Набережные Челны (8552)20-53-41  
Нижний Новгород (831)429-08-12  
Новокузнецк (3843)20-46-81  
Ноябрьск (3496)41-32-12  
Новосибирск (383)227-86-73  
Омск (3812)21-46-40  
Орел (4862)44-53-42  
Оренбург (3532)37-68-04  
Пенза (8412)22-31-16  
Петрозаводск (8142)55-98-37  
Псков (8112)59-10-37  
Пермь (342)205-81-47

Ростов-на-Дону (863)308-18-15  
Рязань (4912)46-61-64  
Самара (846)206-03-16  
Санкт-Петербург (812)309-46-40  
Саратов (845)249-38-78  
Севастополь (8692)22-31-93  
Саранск (8342)22-96-24  
Симферополь (3652)67-13-56  
Смоленск (4812)29-41-54  
Сочи (862)225-72-31  
Ставрополь (8652)20-65-13  
Сургут (3462)77-98-35  
Сыктывкар (8212)25-95-17  
Тамбов (4752)50-40-97  
Тверь (4822)63-31-35

Тольятти (8482)63-91-07  
Томск (3822)98-41-53  
Тула (4872)33-79-87  
Тюмень (3452)66-21-18  
Ульяновск (8422)24-23-59  
Улан-Удэ (3012)59-97-51  
Уфа (347)229-48-12  
Хабаровск (4212)92-98-04  
Чебоксары (8352)28-53-07  
Челябинск (351)202-03-61  
Череповец (8202)49-02-64  
Чита (3022)38-34-83  
Якутск (4112)23-90-97  
Ярославль (4852)69-52-93

Россия +7(495)268-04-70

Казахстан +7(7172)727-132

Киргизия +996(312)96-26-47

<https://ase.nt-rt.ru/> || [aej@nt-rt.ru](mailto:aej@nt-rt.ru)

Our **real duty**  
starts after sales.

**1996** ASE is the **first company**

to produce plastering machines in **Turkey**

**100% TURKISH QUALITY**

**Bestseller** domestic plastering  
machine brand in Turkey

**ASE**

**12 ASE Fireproofing pumps**  
simultaneously operated  
in **MARMARAY**,  
the project of century

Manufacturing at  
**international standards**

Customer **satisfaction** and happiness

We **know**  
what we are doing **“well”**

The **greatest manufacturing**  
infra-structure in plastering  
and screed pumps industry  
in Turkey

Representation of  
**“Made in Turkey”**  
image in international  
exhibitions thoroughly

**Export to 55** countries  
including China

Trick of our work:  
**HONESTY**

International  
**quality**  
certificates

1996: **1 model** plastering machine  
2016: **87 model** plastering and  
mortar pumps

**Reliable brand** in the worldwide  
construction sites

The **greatest Turkish company**

Fast and reliable service

**proudly MADE IN TURKEY**

in plastering machines industry

**Permanently and inexpensive** spare parts



ASE AP

*Use suitable mortar for your machines or select the machine according to your material in order to use the machine technology efficiently.*

[illegible]

## ASE HSP/EM ASE HSP/DM



1

Many screed, plaster and structural mortars are hard to be pumped due to their compositions and chemical additives. Higher pumping pressures should be applied on them for continuous uses.

For constant pressures equal to and over 40 bars, mechanically driven cylinder pumps or screw pumps are not suitable. This is just the work for a double piston pump driven by a hydraulic power unit that is the ASE HSP.

In ASE HSP models, thanks to their hydraulic power unit advantage, it is possible to change the pumping capacity and the pressure setting according to the application requirement. The ASE HSP is operated by minimum abrasion component cost compared to screw pumps.

HSP/EM is electric pumps and pumps with a lifting mixer; HSP/DM is diesel-powered pumps and pumps with a lifting mixer.



### TECHNICAL DATA

	HSP/EM	HSP/DM
Output capacity*	10-135 l/min	10-135 l/min
Pumping pressure*	60 bar	60 bar
Working pressure*	40 bar	40 bar
Maximum aggregate	8 mm	8 mm
Conveying distance*	200 m	200 m
Conveying height*	60 m	60 m
Power supply	400V, 50 Hz	Diesel, 4 cylinders
Fuse protection	3x40 A	-
Drive motor	15,0 kW	26,2 kW, 3000 rpm
Mixer content	180 l	180 l
Compressor	400 l/min, 8 bar	400 l/min, 8 bar
Vibrator	0,17 kW, 205 kg	12 V, 205 kg
Sieve with vibrator	10 mm	10 mm
Remote control	Pneumatic + cable	Pneumatic + cable
Output coupling	2"	2"
Chassis	Torsion axle braked	Torsion axle braked
Material hose	Ø 50+35 mm	Ø 50+35 mm
Dimensions (L/W/H)	2900/1860/1630 mm	2900/1860/1630 mm
Loading height	940 mm	940 mm
Total weight approx.	1490 kg	1600 kg

\* Depending on piston speed, mortar quality, composition and consistency, diameter of the conveying hose, conveying height.

### FIELDS OF APPLICATION

**For all ready-mixed mortars or well-pumpable mixtures with a 0-8 mm granule dispersion to be prepared in the site, hard-to-pump mortars, cement or calcareous cement mortars, lightweight mortars with a large number of air pores, such as:**

- Conventional plaster
- Screed mortars
- Lightweight concrete
- Fibre concrete
- Special plasters
- Stucco siding
- Binding plasters
- Masonry mortar
- Flooring
- Insulating plasters
- Injection mortars
- Spraying mortars
- Fillers and bonding mortars
- Reinforcing and adhesive mortars

... and many more

### STANDARD EQUIPMENT

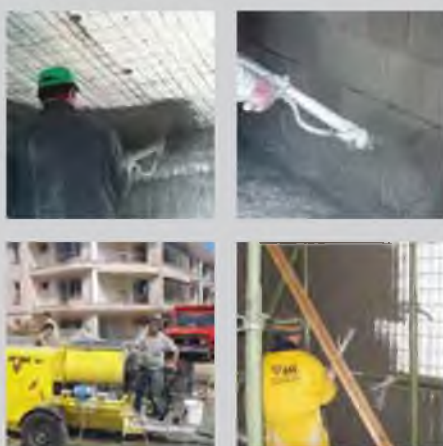
- Mortar hose Ø 50 mm 40 bar 20 m with couplings
- Mortar hose Ø 50 mm 40 bar 10 m with couplings
- Mortar hose Ø 35 mm 40 bar 10 m with swivelling coupling
- Reduction coupling 50/35 mm
- Air hose Ø 10 mm 41 m with GEKA couplings
- Spray gun Ø 35 mm, nozzle 18 mm
- Power cable 5x4 mm<sup>2</sup>, 25 m CEE cpl. 32 A (HSP-EM)
- Auto Lubrication
- Cleaning sponge ball Ø 60 mm, 2 pcs
- Cleaning sponge ball Ø 45 mm, 2 pcs
- Hose cleaning apparatus via air
- Remote control cable 50 m
- Round file
- Tool box
- Towing Unit

## TRADITIONAL PLASTER PUMPS

### ASE VP 500 TMK ASE VP 500 TMK/DHS



2



These are economic and highly efficient screw pumps enabling pumping and spraying applications after mixing pumpable mortars to be prepared in classic method with sand, cement and lime (or chemical additives).

With these superior performance and multi-purpose pumps, it is possible to apply any cement-based dry pre-mixed materials or wet mortars prepared in the plant.

The FC model has the feature that the pumping capacity, thanks to its frequency converter, can be adjusted according to the type of the application.

TMK are electric models with a tilt mixer; TMK/DHS are diesel hydraulic driven models with a tilt mixer; and TMK/DHL is diesel hydraulic driven models with a lifting mixer.

#### TECHNICAL DATA

	VP 500 TMK	VP 500 TMK/FC	VP 500 TMK/DHS
Pumping capacity*	35 l/min	6-35 l/min	6-35 l/min
With various pump*	70 l/min	12-70 l/min	12-70 l/min
Pumping pressure*	40 bar	40 bar	40 bar
Conveying distance*	80-100 m	80-100 m	80-100 m
Conveying height*	40 m	40 m	40 m
Power supply	400 V, 50 Hz	400 V, 50 Hz	Diesel
Fuse protection	3x40 A	3x40 A	-
Pumping motor	7,50 kW	7,50 kW	4 cylinder
Mixer motor	3,0 kW	3,0 kW	Hydraulic
Compressor	2,2 kW, 400 l/min	2,2 kW, 400 l/min	400 l/min, 8 bar
Vibrator	0,17 kW, 205 kg	0,17 kW, 205 kg	12 V, 205 kg
Sieve with vibrator	8 mm	8 mm	8 mm
Remote control	Pneumatic	Pneumatic	Pneumatic
Output coupling	2"	2"	2"
Material hose	Ø 50+35 mm	Ø 50+35 mm	Ø 50+35 mm
Loading height	1250 mm	1250 mm	1250 mm
Mixer content	160 l	160 l	160 l
Dimensions (L/W/H)	2600/1360/1370 mm	2600/1360/1370 mm	2800/1360/1370 mm
Total weight approx.	680 kg	690 kg	900 kg

\* Depending on motor speed, mortar quality, composition and consistency, pump type and condition, diameter of the conveying hose, conveying height.

#### FIELDS OF APPLICATION

For all ready-mixed dry and wet mortars or pumpable mortars to be prepared in the construction site, such as:

- Conventional plaster
- Exterior render
- Cement plaster
- Lime render
- Stucco siding
- Colour plasters
- Flooring
- Injection mortars
- Spraying mortars
- Reinforcing mortar
- Tiling and jointing mortars
- Masonry mortar
- Fibre mortars
- Fibreglass mortars
- Suspension mortars

... and many more

#### STANDARD EQUIPMENT

- Pumping unit 2 L 6 or 2 L 6 Plus
- Mortar hose Ø 50 mm 40 bar 20 m with couplings
- Mortar hose Ø 50 mm 40 bar 10 m with couplings
- Mortar hose Ø 35 mm 40 bar 10 m with swivelling coupling
- Reduction coupling 50/35 mm
- Air hose Ø 10 mm 41 m with GEKA couplings
- Spray gun Ø 35 mm, nozzle 18 mm
- Power cable 5x4 mm<sup>2</sup>, 25 m CEE cpl. 32 A
- Cleaning sponge ball Ø 60 mm, 2 pcs
- Cleaning sponge ball Ø 45 mm, 2 pcs
- Hose cleaning apparatus via air
- Rotor dismantlement device
- Manual or automatic grease pump
- Round file
- Towing unit
- Tool box

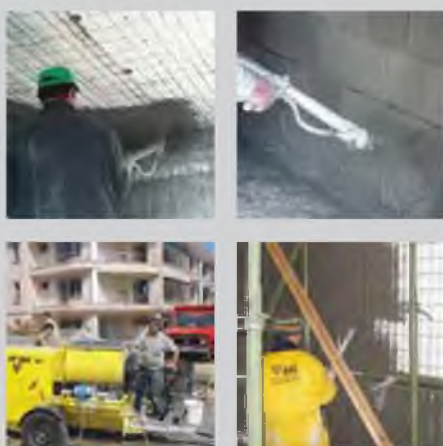


## TRADITIONAL PLASTER PUMPS

**ASE VP 500 EHL**  
**ASE VP 500 DHL**



3



These are economic and highly efficient screw pumps enabling pumping and spraying applications after mixing pumpable mortars to be prepared in classic method with sand, cement and lime (or chemical additives).

With these superior performance and multi-purpose pumps, it is possible to apply any cement-based dry pre-mixed materials or wet mortars prepared in the plant.

TMK are electric models with a tilt mixer; TMK/DHL are diesel hydraulic driven models with a tilt mixer; and TMK/EHL is electrical hydraulic driven models with a lifting mixer.

### TECHNICAL DATA

	VP 500 TMK/EHL	VP 500 TMK/DHL
Pumping capacity*	6-35 l/min	6-35 l/min
With various pump*	12-70 l/min	12-70 l/min
Pumping pressure*	40 bar	40 bar
Conveying distance*	80-100 m	80-100 m
Conveying height*	40 m	40 m
Power supply	400 V, 50 Hz	Diesel
Fuse protection	3x40 A	-
Pumping motor	7,50 kW	4 cylinder
Mixer motor	3,0 kW	Hydraulic
Compressor	2,2 kW, 400 l/min	400 l/min, 8 bar
Vibrator	0,17 kW, 205 kg	12 V, 205 kg
Sieve with vibrator	8 mm	8 mm
Remote control	Pneumatic	Pneumatic
Output coupling	2"	2"
Material hose	Ø 50+35 mm	Ø 50+35 mm
Loading height	1250 mm	1250 mm
Mixer content	160 l	160 l
Dimensions (L/W/H)	2600/1360/1370 mm	
Total weight approx.	690 kg	900 kg

\* Depending on motor speed, mortar quality, composition and consistency, pump type and condition, diameter of the conveying hose, conveying height.

### FIELDS OF APPLICATION

For all ready-mixed dry and wet mortars or pumpable mortars to be prepared in the construction site, such as:

- Conventional plaster
- Exterior render
- Cement plaster
- Lime render
- Stucco siding
- Colour plasters
- Flooring
- Injection mortars
- Spraying mortars
- Reinforcing mortar
- Tiling and jointing mortars
- Masonry mortar
- Fibre mortars
- Fibreglass mortars
- Suspension mortars

... and many more

### STANDARD EQUIPMENT

- Pumping unit 2 L 6 or 2 L 6 Plus
- Mortar hose Ø 50 mm 40 bar 20 m with couplings
- Mortar hose Ø 50 mm 40 bar 10 m with couplings
- Mortar hose Ø 35 mm 40 bar 10 m with swivelling coupling
- Reduction coupling 50/35 mm
- Air hose Ø 10 mm 41 m with GEKA couplings
- Integrated pressure manometer 0-60 bar
- Sieve with vibrator 8 mm
- Spray gun Ø 35 mm, nozzle 18 mm
- Air compressor 400 l/min 8 bar
- Power cable 5x4 mm<sup>2</sup>, 25 m CEE cpl. 32 A
- Cleaning sponge ball Ø 60 mm, 2 pcs
- Cleaning sponge ball Ø 45 mm, 2 pcs
- Hose cleaning apparatus via air
- Rotor dismantlement device
- Manual or automatic grease pump
- Round file
- Towing unit, Tool box

# ASE SIVAJET

## ASE SIVAJET MN



4

ASE SIVAJET is a small sized ready-mixed plaster machine. It is a light-practical to carry, space-efficient, durable, ideal and economic machine for small works that do not necessitate big machinery.

ASE SIVAJET can fulfil the same applications as the ASE SM 5 can. It is possible to make applications with any ready-mixed dry mixture materials and to work constantly.

Only one person is enough to mount and demount it and it can be easily carried in a car trunk.

The SIVAJET MN model is an alternative model that can be 230 volts in sites with no three-phase electricity.



### TECHNICAL DATA

	SIVAJET	SIVAJET MN
Pumping capacity*	25 l/min	13 l/min
With various pump*	6-35 l/min	6-30 l/min
Pumping pressure*	30 bar	20 bar
Conveying distance*	max. 50 m	max. 30 m
Drive	400 V, 50 Hz	230 V, 20-70 Hz
Fuse protection	3x32 A	1x32 A
Pumping motor	5,50 kW	5,50 kW
Water supply connection	1"	1"
Water pressure	min. 2,5 bar	min. 2,5 bar
Compressor	0,9 kW 250 l/min, 6 bar	0,9 kW 250 l/min, 6 bar
Remote control	Pneumatic	Pneumatic
Mortar hose	Ø 25 mm	Ø 25 mm
Loading height	1140 mm	1140 mm
Dimensions (L/W/H)	1100/730/1400 mm	1100/730/1400 mm
Total weight	155 kg	165 kg

\* Depending on motor speed, mortar quality, composition and consistency, pump type and condition, diameter of the conveying hose, conveying height.

### FIELDS OF APPLICATION

For all pumpable ready-mixed dry mortars, such as:

- Gypsum plasters
- Lime-gypsum plasters
- Cement renders
- Lime plasters
- Cement-lime plaster
- Exterior plaster
- Injection mortars
- Reinforcing mortars
- Bonding mortars
- Steel door frame fixing
- Slot mortars
- Self-levelling floor screeds

... and many more

### STANDARD EQUIPMENT

- Pump unit D Series
- Pump unit D ECO Series (SIVAJET MN)
- Mortar hose Ø 25 mm 40 bar mm 10 m with couplings
- Air hose 10 mm 11 m with GEKA couplings
- Water hose 1" 5 m with check valve and filter
- Plaster spraying gun Ø 25 mm, nozzle 14 mm
- Air compressor oil-less diaphragm type; with pressure switch-off
- Mixing shaft
- Cleaning shaft complete
- Power cable 5x4 mm<sup>2</sup> 25 m CEE cpl. 32 A
- Cleaning sponge ball Ø 30 mm
- Manual rotor dismantlement device
- Round file
- Shifting spanner
- 6/125 screwdriver

# ASE SM 5 ASE SM 5 PLUS ASE SM 5 PREMIUM



5



ASE SM 5 is the most preferred model by professional masters and the best selling ready-made plaster pump. This is because it is economic and efficient. Thanks to its advanced body and automation system, it is operated with the least maintenance service in sites.

ASE SM 5 is a superior performance ready-mixed plastering machine enabling pumping and spraying applications after homogenously mixing any gypsum- or cement-based ready-mixed dry mixture materials continuously and full automatically.

## TECHNICAL DATA

	SM 5	SM 5 PLUS	SM 5 PREMIUM
Pumping capacity*	27 l/min	27 l/min	27 l/min
With various pump*	6-35 l/min	6-35 l/min	6-35 l/min
Pumping pressure*	30 bar	30 bar	30 bar
Conveying distance*	max. 50 m	max. 50 m	max. 50 m
Power supply	400 V, 50 Hz	400 V, 50 Hz	400 V, 50 Hz
Pumping motor	5,50 kW	5,50 kW	5,50 kW
Loading motor	0,55 kW	0,55 kW	0,55 kW
Fuse protection	3x32 A	3x32 A	3x32 A
Water supply connection	3/4"	3/4"	3/4"
Water pressure	min. 2,5 bar	min. 2,5 bar	min. 2,5 bar
Compressor capacity	0,9 kW, 250 l/min, max. 6 bar	0,9 kW, 250 l/min, max. 6 bar	0,9 kW, 250 l/min, max. 6 bar
Remote control	Pneumatic	Pneumatic	Pneumatic
Mortar hose	Ø 25 mm	Ø 25 mm	Ø 25 mm
Hopper content	150 l	150 l	150 l
Loading height	940 mm	940 mm	940 mm
Dimensions (L/W/H)	1250/740/1550 mm	1250/750/1550 mm	1250/750/1550 mm
Total weight	325 kg	330 kg	330 kg

\* Depending on motor speed, mortar quality, composition and consistency, pump type and condition, diameter of the conveying hose, conveying height.

## FIELDS OF APPLICATION

For all pumpable ready-mixed dry mortars, such as:

- Gypsum plasters
- Lime-gypsum plasters
- Exterior plaster
- Cement renders
- Lime plasters
- Cement-lime plaster
- Masonry mortar
- Injection mortars
- Insulating plasters
- Reinforcing mortars
- Bonding mortars
- Slot mortars
- Self-levelling floor screeds

... and many more

## STANDARD EQUIPMENT

- Pump unit D Series
- Mortar hose Ø 25 mm 40 bar 15 m with couplings
- Air hose Ø 10 mm 16 m with GEKA couplings
- Water hose 1" 5 m with check valve and filter
- Plaster spraying gun Ø 25 mm, nozzle 14 mm
- Power cable 5x4 mm<sup>2</sup> 25 m CEE cpl. 32 A
- Air compressor oil-less diaphragm type; with pressure switch-off
- Mixing shaft
- Cleaning shaft complete
- Manual rotor dismantlement device
- Cleaning sponge ball Ø 30 mm
- Round file
- Shifting spanner
- 6/125 screwdriver



# ASE SM 5 MN

# ASE SM 5 MT

## NEXT GENERATION



6



ASE SM 5 is the most preferred model by professional masters and the best selling ready-made plaster pump. This is because it is economic and efficient. Thanks to its advanced body and automation system, it is operated with the least maintenance service in sites.

ASE SM 5 is a superior performance ready-mixed plastering machine enabling pumping and spraying applications after homogenously mixing any gypsum- or cement-based ready-mixed dry mixture materials continuously and full automatically.

The operating voltage of the ASE SM 5 MN model is 220V. ASE SM 5 MT model supports both 220V and 380V.

### TECHNICAL DATA

	SM 5 MN	SM 5 MT
Pumping capacity*	27 l/min	27 l/min
With various pump*	6-35 l/min	6-35 l/min
Pumping pressure*	30 bar	30 bar
Conveying distance*	max. 50 m	max. 50 m
Power supply	400 V, 50 Hz	400 V, 50 Hz
Pumping motor	5,50 kW	5,50 kW
Loading motor	0,55 kW	0,55 kW
Fuse protection	1x32 A	3x32 A
Water supply connection	1"	1"
Water pressure	min. 2,5 bar	min. 2,5 bar
Compressor capacity	0,9 kW, 250 l/min, max. 6 bar	0,9 kW, 250 l/min, max. 6 bar
Remote control	Pneumatic	Pneumatic
Mortar hose	Ø 25 mm	Ø 25 mm
Hopper content	150 l	150 l
Loading height	940 mm	940 mm
Dimensions (L/W/H)	1250/740/1550 mm	1050/750/1550 mm
Total weight	325 kg	330 kg

\* Depending on motor speed, mortar quality, composition and consistency, pump type and condition, diameter of the conveying hose, conveying height.

### FIELDS OF APPLICATION

For all pumpable ready-mixed dry mortars, such as:

- Gypsum plasters
- Lime-gypsum plasters
- Exterior plaster
- Cement renders
- Lime plasters
- Cement-lime plaster
- Masonry mortar
- Injection mortars
- Insulating plasters
- Reinforcing mortars
- Bonding mortars
- Slot mortars
- Self-levelling floor screeds

... and many more

### STANDARD EQUIPMENT

- Pump unit Turbo Power
- Mortar hose Ø 25 mm 40 bar 15 m with couplings
- Air hose Ø 10 mm 16 m with GEKA couplings
- Water hose 1" 5 m with check valve and filter
- Plaster spraying gun Ø 25 mm, nozzle 14 mm
- Power cable 3x4 mm<sup>2</sup> 25 m CEE cpl. 32 A
- Mixing shaft
- Cleaning shaft complete
- Manual rotor dismantlement device
- Cleaning sponge ball Ø 30 mm
- Round file
- Shifting spanner
- 6/125 screwdriver

## ASE DUOJET ASE DUOJET FC

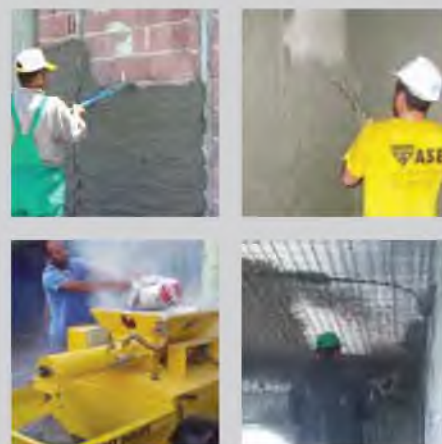


7

DUOJET is a superior performance and easy to move, mobile ready-mixed mortar pump where a continuous mixer and screw pump are combined on the same chassis.

Since the compressor unit and control box are also on the same chassis, using is highly easy and practical.

The FC model has the feature that the pumping capacity, thanks to its frequency converter, can be adjusted in any rate any time according to the material requirement and the type of the application.



### TECHNICAL DATA

	DUOJET	DUOJET FC
Pumping capacity*	35 l/min	0-35 l/min
With various pump*	6-70 l/min	0-70 l/min
Pumping pressure*	40 bar	40 bar
Conveying distance*	100 m	100 m
Conveying height*	40 m	40 m
Power supply	400 V, 50 Hz	400 V, 50 Hz
Fuse protection	3x40 A	3x40 A
Pumping motor	7,50 kW	7,50 kW
Mixer motor	3,0 kW	3,0 kW
Water supply connection	1"	1"
Water pressure	min. 2,5 bar	min. 2,5 bar
Compressor capacity	2,2 kW, 400 l/min, 8 bar	2,2 kW, 400 l/min, 8 bar
Remote control	Pneumatic	Pneumatic
Power cable	5x4 mm <sup>2</sup>	5x4 mm <sup>2</sup>
Output coupling	2"	2"
Conveying hose	Ø 35 mm	Ø 35 mm
Loading height	1070 mm	1070 mm
Dimensions (L/W/H)	3300/1200/1120 mm	3300/1200/1120 mm
Total weight approx.	580 kg	595 kg

\* Depending on motor speed, mortar quality, composition and consistency, pump type and condition, diameter of the conveying hose, conveying height.

### FIELDS OF APPLICATION

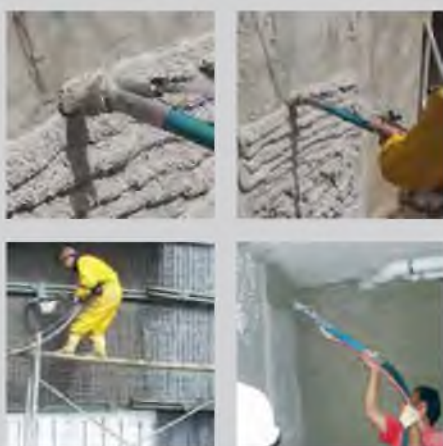
For all pumpable ready-mixed dry mortars or pumpable ready wet mortars, such as:

- Cement based plasters
- Lime plasters
- Perlite plasters
- Interior plasters
- Exterior plaster
- Restoration plaster
- Cement renders
- Cement-lime plaster
- Masonry mortar
- Injection mortars
- Insulating plasters
- Reinforcing mortars
- Bonding mortars
- Self-levelling floor screeds

... and many more

### STANDARD EQUIPMENT

- Pump unit 2 L 6 or 2 L 6 Plus
- Mortar hose Ø 35 mm 40 bar 10 m with couplings
- Air hose Ø 10 mm 11 m with GEKA couplings
- Reduction coupling 50/35 mm
- Water hose 1" 5 m with check valve and filter
- Spraying gun Ø 35 mm, nozzle 18 mm
- Power cable 5x4 mm<sup>2</sup> 25 m CEE cpl. 32 A
- Cleaning sponge ball Ø 45 mm
- Rotor dismantlement device
- Manual grease pump
- Round file
- Tool box



In spraying applications with machine for some of the special mortars having multi-components, it's quite necessary that the mixture continues for a while and reacts with the air in terms of quality and application. ASE UNIVERSAL is an ideal machine for such tasks.

Particularly, it's very important for the spraying applications that the materials having binary components or multi-components to be mixed for a period as required and complete the mixing before pumping. This is possible with the machines having separate mixer units as UNIVERSAL.

As the materials are pre-mixed well in ASE UNIVERSAL, wear parts such as rotor-stator are more long lasting.

Pumping capacity in FC model can be adjusted at any time at any rate thanks to its frequency converter.

### TECHNICAL DATA

	UNIVERSAL	UNIVERSAL FC
Pumping capacity*	35 l/min	0-35 l/min
With various pump*	70 l/min	0-70 l/min
Pumping pressure*	30 bar	30 bar
Conveying distance*	50 m	50 m
Conveying height*	30 m	30 m
Power supply	400 V, 50 Hz	400 V, 50 Hz
Fuse protection	3x32 A	3x32 A
Pumping motor	5,50 kW	5,50 kW
Mixer motor	3,0 kW	3,0 kW
Compressor capacity	2,2 kW, 400 l/min, 8 bar	2,2 kW, 400 l/min, 8 bar
Remote control	Pneumatic	Pneumatic
Power cable	5x4 mm <sup>2</sup>	5x4 mm <sup>2</sup>
Output coupling	1 1/2"	1 1/2"
Conveying hose	Ø 35 mm	Ø 35 mm
Loading height	1250 mm	1250 mm
Dimensions (L/W/H)	1850/740/1430 mm	1850/740/1430 mm
Compressor unit (L/W/H)	500/730/1200 mm	650/750/1200 mm
Total weight approx.	380+57 kg	380+64 kg

\* Depending on motor speed, mortar quality, composition and consistency, pump type and condition, diameter of the conveying hose, conveying height.

### FIELDS OF APPLICATION

For all pumpable one-component or multi-component ready-mixed dry mortars, such as:

- Thermal isolation plasters
- Insulation materials
- Coloured plasters
- Cement renders
- Cement-lime plaster
- Spray mortars
- Priming materials
- Lime plasters
- Perlite plasters
- Interior plasters
- Exterior plaster
- Restoration plaster
- Masonry mortar
- Injection mortars
- Reinforcing mortars
- Bonding mortars
- Self-levelling floor screeds

... and many more

### STANDARD EQUIPMENT

- Pump unit D Series
- Mortar hose Ø 35 mm 40 bar 15 m with couplings
- Air hose Ø 10 mm 20 m with GEKA couplings
- Seal for hose couplings MDR 35, 2 pcs
- Rubber ring for Geka couplings GKOR-N, 2 pcs
- Diaphragm for manometer, 2 pcs
- Spraying gun Ø 35 mm, nozzle 18 mm
- Power cable 5x4 mm<sup>2</sup> 25 m CEE cpl. 32 A
- Hose cleaning apparatus via air
- Rotor dismantlement device
- Cleaning sponge ball Ø 45 mm, 2 pcs
- Manual grease pump
- Round file
- Tool box

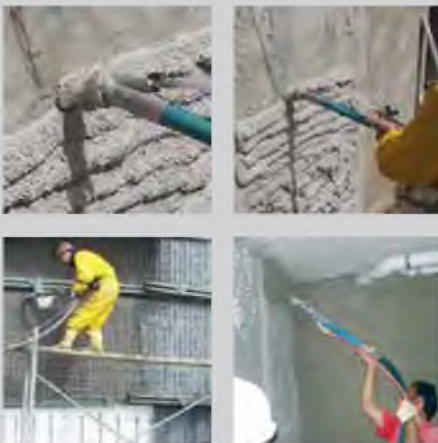


## ASE UNIVERSAL 75 ASE UNIVERSAL 75 FC



**NEXT**  
GENERATION

9



In spraying applications with machine for some of the special mortars having multi-components, it's quite necessary that the mixture continues for a while and reacts with the air in terms of quality and application. ASE UNIVERSAL is an ideal machine for such tasks.

Particularly, it's very important for the spraying applications that the materials having binary components or multi-components to be mixed for a period as required and complete the mixing before pumping. This is possible with the machines having separate mixer units as UNIVERSAL.

As the materials are pre-mixed well in ASE UNIVERSAL 75, wear parts such as rotor-stator are more long lasting.

Pumping capacity in FC model can be adjusted at any time at any rate thanks to its frequency converter.

### TECHNICAL DATA

	UNIVERSAL 75	UNIVERSAL 75 FC
Pumping capacity*	70 l/min	0-70 l/min
With various pump*	35 l/min	0-35 l/min
Pumping pressure*	40 bar	40 bar
Conveying distance*	80-100 m	80-100 m
Conveying height*	40-50 m	40-50 m
Power supply	400 V, 50 Hz	400 V, 50 Hz
Fuse protection	3x32 A	3x32 A
Pumping motor	7,50 kW	7,50 kW
Mixer motor	3,0 kW	3,0 kW
Compressor capacity	2,2 kW, 400 l/min, 8 bar	2,2 kW, 400 l/min, 8 bar
Remote control	Pneumatic	Pneumatic
Power cable	5x4 mm <sup>2</sup>	5x4 mm <sup>2</sup>
Output coupling	1 1/2"	1 1/2"
Conveying hose	Ø 35 mm	Ø 35 mm
Loading height	1250 mm	1250 mm
Dimensions (L/W/H)	1850/740/1430 mm	1850/740/1430 mm
Compressor unit (L/W/H)	500/730/1200 mm	650/750/1200 mm
Total weight approx.	380+57 kg	380+64 kg

\* Depending on motor speed, mortar quality, composition and consistency, pump type and condition, diameter of the conveying hose, conveying height.

### FIELDS OF APPLICATION

For all pumpable one-component or multi-component ready-mixed dry mortars, such as:

- Thermal isolation plasters
- Insulation materials
- Coloured plasters
- Cement renders
- Cement-lime plaster
- Spray mortars
- Priming materials
- Lime plasters
- Perlite plasters
- Interior plasters
- Exterior plaster
- Restoration plaster
- Masonry mortar
- Injection mortars
- Reinforcing mortars
- Bonding mortars
- Self-levelling floor screeds

... and many more

### STANDARD EQUIPMENT

- Pumping unit 2 L 6 or 2 L 6 Plus
- Mortar hose Ø 50 mm 40 bar 20 m with couplings
- Mortar hose Ø 50 mm 40 bar 10 m with couplings
- Mortar hose Ø 35 mm 40 bar 10 m with swivelling coupling
- Reduction coupling 50/35 mm
- Air hose Ø 10 mm 41 m with GEKA couplings
- Spray gun Ø 35 mm, nozzle 18 mm
- Power cable 5x4 mm<sup>2</sup>, 25 m CEE cpl. 32 A
- Cleaning sponge ball Ø 60 mm, 2 pcs
- Cleaning sponge ball Ø 45 mm, 2 pcs
- Hose cleaning apparatus via air
- Rotor dismantlement device
- Manual grease pump
- Round file
- Tool box

## ASE EVP 18 ASE HVP 18



10

These are the most advanced superior performance pumps designed especially for ready-mixed wet screed applications, operated by a rotor-stator system, and with a pumping capacity of 18 m<sup>3</sup> per hour.

They are ideal to pump ready-mixed wet mortars or lightweight concrete materials in S4 and S5 consistency with a pumpable design up to a granule size of 16 mm (12 mm for spraying) received from the plant or prepared in the site.

The model EVP 18 has the feature that the pumping capacity, thanks to its frequency converter, can be adjusted in any rate any time according to the application requirement.

HVP 18 Diesel-powered model provides many advantages in the sites with no electricity.



### TECHNICAL DATA

	EVP 18	HVP 18
Pumping capacity*	18 m <sup>3</sup> /h	18 m <sup>3</sup> /h
Pumping pressure*	30 bar	30 bar
Maximum granule size	16 mm	16 mm
Conveying distance*	100 m	100 m
Conveying height*	40 m	40 m
Drive	400 V, 50 Hz	Diesel
Fuse protection	3x63A	-
Pump motor	22kW, geared motor	26 kW/32,5 HP
Hopper content	240 l	240 l
Vibrator	0,17 kW, 205 kg	12 V, 205 kg
Sieve with vibrator	12 or 16 mm	12 or 16 mm
Output coupling	2 ½"	2 ½"
Material hose	Ø 65 mm	Ø 65 mm
For pouring-spraying	Ø 50 mm	Ø 50 mm
Dimensions (L/W/H)	3260/1360/1300 mm	3460/1360/1300 mm
Loading height	1150 mm	1150 mm
Total weight approx.	920 kg	1390 kg

\* Depending on motor speed, mortar quality, composition and consistency, pump type and condition, diameter of the conveying hose, conveying height.

\* Consistency class: S4 (fluid). Slump range: 160-210 mm.

### FIELDS OF APPLICATION

**For all pumpable ready-mixed wet mortars or lightweight concrete mixtures up to a granule size of 16 mm, such as:**

- Screed mortars
- Self-levelling screed
- Anhydride based screed
- Self-compacting concrete
- Lightweight concrete pumping
- Fibre reinforced concrete
- Polystyrene lightweight concrete
- Wet shotcrete
- Flooring
- Insulating mortars
- Injection mortars
- Spraying mortars
- Reinforcing mortars
- Masonry mortars
- Fillers and bonding mortars
- Rough casts
- Restoration plasters

... and many more

### STANDARD EQUIPMENT

- Pumping unit 2 L 8
- Geared motor 22 kW, 400 V, 50 Hz (EVP 18)
- 4 cylinder 26 kW Diesel motor (HVP 18)
- Control box with phase sequence relay and frequency converter
- Integrated mortar pressure gauge 0-60 bar
- Power cable 5x4 mm<sup>2</sup> TTR, 25 m CEE cpl. 32 A
- Rotor dismantlement apparatus
- Integrated rotor-stator tool box
- Manual grease pump
- Integrated tool box
- Avandılık Seti

### RECOMMENDED ACCESSORIES

- Extension power cable 5x4 mm<sup>2</sup> 25 m
- Extension power cable 5x4 mm<sup>2</sup> 50 m
- Remote control cable 50 m or 100 m
- Mortar hose Ø 65 mm 10 m with couplings
- Mortar hose Ø 65 mm 20 m with couplings
- Mortar hose Ø 50 mm 10 m with couplings
- Reduction coupling 65/50 mm
- Cleaning sponge ball 80 mm
- Cleaning sponge ball 60 mm

# ASE VP 210

## ASE VP 210 K/FC



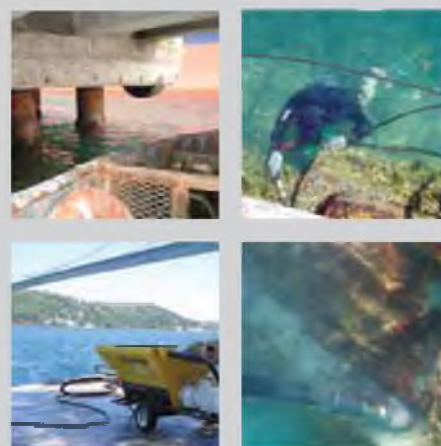
11

ASE VP 210 is an electrically operated, screw mini pump. As it is modular and lightweight, it can be easily moved everywhere.

It is specifically ideal for pumping special application mortars requiring double mixture.

The pumping is carried out feeding material by a bucket, silo or mortar mixers. K models with built-in compressor enable spraying, as well.

The FC model has the feature that the pumping capacity, thanks to its frequency converter, can be adjusted in any rate any time according to the material requirement and the type of the application.



### TECHNICAL DATA

	VP 210	VP 210 K	VP 210 K/FC
Pumping capacity*	35 l/min	35 l/min	0-35 l/min
With various pump*	3-55 l/min	3-55 l/min	0-55 l/min
Pumping pressure*	30 bar	30 bar	30 bar
Conveying distance*	50 m	50 m	50 m
Conveying height*	30 m	30 m	30 m
Power supply	400 V, 50 Hz	400 V, 50 Hz	400 V, 50 Hz
Pumping motor	5,50 kW	5,50 kW	5,50 kW
Fuse protection	3x25 A	3x25 A	3x25 A
Compressor capacity	-	2.2kW, 400 l/min, 8 bar	
Remote control	-	Pneumatic	Pneumatic
Material hose	Ø 25 mm	Ø 25 mm	Ø 25 mm
Hopper content	75 l	75 l	75 l
With extension	120 l	120 l	120 l
Loading height	500 mm	500 mm	500 mm
Dimensions (L/W/H)	1800/650/530 mm	1800/650/530 mm	1800/650/530 mm
Compressor unit	-	500/730/1200 mm	650/750/1200 mm
Total weight approx.	130 kg	126+57 kg	126+64 kg

\* Depending on motor speed, mortar quality, composition and consistency, pump type and condition, diameter of the conveying hose, conveying height.

### FIELDS OF APPLICATION

For all pumpable ready-mixed dry mortars, such as:

- Insulating plasters
- Reinforcing plasters
- Finishing coats
- Synthetic plasters
- Silicate plasters
- Bonding mortars
- Restoration mortars
- Multi-component materials
- Fibre reinforced mortars

For wet mortars and pasty products, such as:

- Texture coats
- Bonding mortars
- Insulating mortars
- Decorative plasters
- Finish coats up to 3 mm grain size

For liquid materials, such as:

- Primers
- Concrete primer
- Dispersion paints

... and many more

### STANDARD EQUIPMENT

- Pump unit D Series
- Geared motor 5,5 kW
- Air compressor oil-less diaphragm type; with pressure switch-off
- Reduction coupling 35/25 mm
- Protection grid
- Mortar hose Ø 25 mm 10 m with couplings
- Air hose 10 mm 16 m with GEKA couplings (K/K FC)
- Spray gun Ø 25 mm, nozzle 14 mm (K/K FC)
- Cleaning sponge ball Ø 30 mm, 2 pcs
- Power cable 5x4 mm<sup>2</sup> 25 m CEE cpl. 32 A
- Rotor dismantlement apparatus
- Manual grease pump
- Round file (K)
- Tool box



# ASE VP 250

## ASE VP 250 K/FC



12



ASE VP 250 is a new generation, compact, screw midi pump.

It has a high pumping capacity and it's ideal for grout transfer to more distant points.

Extremely easy to use with its new compact design and quite simple to perform cleaning and maintenance services.

A high performance machine for pumping the pre-mixed dry grouts with multi-components having large granules (0-8 mm).

It's also possible to implement spraying application in K models including compressor.

Pumping capacity in FC model can be adjusted at any time at any rate with its frequency converter.

### TECHNICAL DATA

	VP 250	VP 250 K	VP 250 K/FC
Pumping capacity*	35 l/min	35 l/min	0-35 l/min
With various pump*	6-70 l/min	6-70 l/min	0-70 l/min
Pumping pressure*	40 bar	40 bar	40 bar
Conveying distance*	80-100 m	80-100 m	80-100 m
Conveying height*	40 m	40 m	40 m
Power supply	400 V, 50 Hz	400 V, 50 Hz	400 V, 50 Hz
Fuse protection	3x25 A	3x25 A	3x25 A
Pumping motor	7,50 kW	7,50 kW	7,50 kW
Compressor capacity	-	400 l/min, 8 bar	400 l/min, 8 bar
Remote control	-	Pneumatic	Pneumatic
Output coupling	1 1/2"	1 1/2"	1 1/2"
Conveying hose	Ø 35 mm	Ø 35 mm	Ø 35 mm
Loading height	680 mm	680 mm	680 mm
Hopper content	117 l	117 l	117 l
Dimensions (L/W/H)	1850/740/680 mm	1850/740/680 mm	1850/740/680 mm
Compressor unit	-	500/730/1200 mm	650/750/1200 mm
Total weight approx.	165 kg	160+57 kg	160+64 kg

\* Depending on motor speed, mortar quality, composition and consistency, pump type and condition, type of conveying screw, diameter of the conveying hose, conveying height.

### FIELDS OF APPLICATION

**For all pumpable ready wet mortars or pumpable mortars to be prepared in the construction site, such as:**

- Grouting mortars
- Reinforcing mortars
- Injection mortars
- Spraying mortars
- Restoration plasters
- Insulation mortars
- Self levelling components
- Masonry mortars
- Flooring mortars
- Screed mortars
- Fillers and bonding mortars
- Reinforcing and adhesive mortars
- Fibre mortars
- Fibreglass mortars
- Suspension mortars

... and many more

### STANDARD EQUIPMENT

- Pumping unit 2 L 6 or 2 L 6 Plus
- Mortar hose Ø 35 mm 40 bar 15 m with couplings
- Air hose Ø 10 mm 20 m with GEKA couplings (K/K FC)
- Seal for hose couplings MDR 35, 2 pcs
- Rubber ring for Geka couplings GKOR-N, 2 pcs
- Spray gun Ø 35 mm, nozzle 18 mm (K)
- Power cable 5x4 mm<sup>2</sup>, 25 m, CEE cpl. 32 A
- Cleaning sponge ball Ø 45 mm, 2 pcs
- Rotor dismantlement apparatus
- Hose cleaning apparatus via air (K)
- Manual grease pump
- Round file (K)
- Tool box

### RECOMMENDED ACCESSORIES

Mortar hose Ø 50 mm 40 bar 20 m with couplings  
Mortar hose Ø 50 mm 40 bar 20 m with couplings  
Cleaning sponge ball Ø 60 mm

## MORTAR CONVEYING PUMPS

### ASE VP 500 ASE VP 500 K/FC



13

ASE VP 500 is an electrically operated screw pump, which is ideal for conveying materials to higher and farther spots with a greater pumping capacity.

It is a high performance machine for conveying any cement-based pumpable ready-mixed wet mortars with a granule dispersion of 0-8 mm brought by the plant or mixed in the site.

Thanks to its sieve with a standard vibrator, the pump is protected against deformation caused by large aggregates.

K models with built-in compressor enable spraying, as well.

The FC model has the feature that the pumping capacity, thanks to its frequency converter, can be adjusted in any rate any time according to the type of the application.



#### TECHNICAL DATA

	VP 500	VP 500 K	VP 500 K/FC
Pumping capacity*	35 l/min	35 l/min	0-35 l/min
With various pump*	70 l/min	70 l/min	0-70 l/min
Pumping pressure*	40 bar	40 bar	40 bar
Conveying distance*	80-100 m	80-100 m	80-100 m
Conveying height*	40 m	40 m	40 m
Power supply	400 V, 50 Hz	400 V, 50 Hz	400 V, 50 Hz
Fuse protection	3x32 A	3x32 A	3x32 A
Pumping motor	7,50 kW	7,50 kW	7,50 kW
Vibrator	0,17 kW, 205 kg	0,17 kW, 205 kg	0,17 kW, 205 kg
Sieve with vibrator	8-10 mm	8-10 mm	8-10 mm
Compressor capacity	-	400 l/min, 8 bar	400 l/min, 8 bar
Remote control	-	Pneumatic	Pneumatic
Output coupling	2"	2"	2"
Conveying hose	Ø 50+35 mm	Ø 50+35 mm	Ø 50+35 mm
Loading height	740 mm	740 mm	740 mm
Hopper content	155 l	155 l	155 l
Dimensions (L/W/H)	2490/1200/1070 mm	2490/1200/1070 mm	2490/1200/1070 mm
Total weight approx.	440 kg	465 kg	475 kg

\* Depending on motor speed, mortar quality, composition and consistency, pump type and condition, type of conveying screw, diameter of the conveying hose, conveying height.

#### FIELDS OF APPLICATION

For all pumpable ready wet mortars or pumpable mortars to be prepared in the construction site, such as:

- Reinforcing mortars
- Injection mortars
- Conventional plaster
- Exterior render
- Cement render
- Lime render
- Restoration plaster
- Thermal insulation mortars
- Self levelling components
- Masonry mortar
- Flooring mortars
- Screed mortars
- Spraying mortars
- Fillers and bonding mortars
- Reinforcing and adhesive mortars
- Fibre mortars
- Fibreglass mortars
- Suspension mortars

... and many more

#### STANDARD EQUIPMENT

- Pumping unit 2 L 6 or 2 L 6 Plus
- Mortar hose Ø 50 mm 40 bar 20 m with couplings
- Mortar hose Ø 50 mm 40 bar 10 m with couplings
- Mortar hose Ø 35 mm 40 bar 10 m with swivelling couplings
- Air hose Ø 10 mm 41 m with GEKA couplings (K/ K FC)
- Reduction coupling 50/35 mm
- Sieve with vibrator 8-10 mm
- Spray gun Ø 35 mm, nozzle 18 mm (K)
- Power cable 5x4 mm<sup>2</sup>, 25 m, CEE cpl. 32 A
- Cleaning sponge ball Ø 60 mm, 2 pcs
- Cleaning sponge ball Ø 45 mm, 2 pcs
- Rotor dismantlement apparatus
- Hose cleaning apparatus via air (K)
- Manual grease pump
- Towing Unit (optional)
- Round file
- Tool box

# ASE SHM 25

## ASE SHM 25 MN



14

ASE SHM 25 is a multi-purpose, small-sized, modular, easy to carry, horizontal continuous mortar mixer.

It continuously produces homogenous mixtures by automatically taking any lime- or cement-based dry pre-mixed mortars bagged in a granule size of up to 4 mm or silo mortars and water in any specified rate.

ASE SHM 25 can be easily combined to the mortar conveying pumps. Material feed may be made from the bag or silo.

ASE SHM 25 is an ideal mixer for mixing especially insulating plasters and multi-composition mortars and for spraying with small screw pumps.



### TECHNICAL DATA

	SHM 25	SHM 25 MN
Mixing capacity*	20-50 l/min	20-50 l/min
Power supply	400 V, 50 Hz	230 V, 20-70 Hz
Mixer motor	3,0 kW	3,0 kW
Speed of motor	280 rpm	280 rpm
Water supply connection	1"	1"
Water pressure	min. 2,5 bar	min. 2,5 bar
Fuse protection	3x25 A	3x25 A
Power cable	5x2,5 mm <sup>2</sup>	3x2,5 mm <sup>2</sup>
Hopper content	90 l	90 l
Loading height	950 mm	950 mm
Length	1900 mm	1900 mm
Width	680 mm	680 mm
Height	980 mm	980 mm
Total weight	120 kg	125 kg

\* Depending on motor speed, mortar quality, composition and consistency, type of the mixing shaft.

### FIELDS OF APPLICATION

**For all mixes bagged, lime- and cement-based ready-mixed dry mortars with grain size of max. 4 mm, such as:**

- Insulating plasters
- Flooring mortars
- Reinforcing mortars
- Decorative mortars
- Finishing coats
- Masonry mortars
- Light masonry mortars
- Screed mortars
- Levelling compounds
- Bonding mortars
- Lime renders
- Restoration renders
- Silicate renders
- Tilling and jointing mortars

... and many more

### STANDARD EQUIPMENT

- Water hose 1" 5 m with check valve and filter
- Power cable 5x4 mm<sup>2</sup> 25 m CEE cpl. 32 A
- Power cable 3x4 mm<sup>2</sup> 25 m CEE cpl. 32 A (MN)
- Manual gres pump
- Regulator wrench
- Shifting spanner
- 6/125 screwdriver





ASE MIX 15 designed for mixing special materials such as grouting, refractory, masonry, filling, injecting mortars, etc.

It homogenously mixes any dry pre-mixed factory-made materials or mortars to be prepared in the site with water and makes them ready to be used.

ASE MIX 15 S model has an automatic water feeding system. Water is fed into the mixer at quantities specified on the digital indicator thanks to the pulse water meter.

It's possible to continue the water feeding through the manual button in case of additional water requirement.

#### TECHNICAL DATA

	MIX 15
Mixing capacity*	50-200 l/min
Power supply	400 V, 50 Hz
Fuse protection	3x25 A
Mixer motor	3,0 kW
Speed of motor	55 rpm
Hopper content	160 l
Loading height	1150 mm
Power cable	5x4 mm <sup>2</sup>
Length	2500 mm
Width	1200 mm
Height	1215 mm
Total weight approx.	210 kg

\* Depending on motor speed, mortar quality, composition and consistency, type of the mixing paddle.

#### FIELDS OF APPLICATION

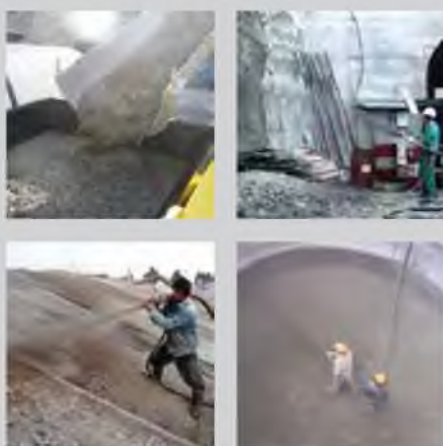
For all lime- or cement-based ready-mixed dry mortars and construction site mixes, such as:

- Grouting mortars
- Refractory mortars
- Injection mortars
- Masonry mortars
- Light concrete mortars
- Reinforcing mortars
- Decorative renders
- Cement renders
- Lime renders
- Insulating renders
- Floor screed mortars
- Scratch coat renders
- Levelling compounds
- Restoration renders
- Bonding mortars
- Facing renders
- Tilling and jointing mortars

... and many more

#### STANDARD EQUIPMENT

- Power cable 5x2,5 mm<sup>2</sup> 25 m CEE cpl. 32 A
- Manual gres pump
- Shifting spanner
- 6/125 screwdriver



ASE EVP 18 S is a system where a high capacity screw pump and all the other necessary equipment are mounted on a special trailer body used especially for wet Shotcrete and guniting applications.

It is ideal for Shotcrete applications to pump ready-mixed wet mortars in S4-S5 consistency with a pumpable design up to a granule size of 16 mm (12 mm in spraying systems) received from the plant or prepared in the site in a rate up to 18 m<sup>3</sup> per hour.

The model EVP 18 S has the feature that the pumping capacity, thanks to its frequency converter, can be adjusted in any rate any time according to the application requirement.

HVP 18 S diesel-powered model provides many advantages in the sites with no electricity.

#### TECHNICAL DATA

	EVP 18 S	HVP 18 S
Conveying capacity*	2-18 m <sup>3</sup> /h	2-18 m <sup>3</sup> /h
Conveying pressure*	30 bar	30 bar
Maximum granule size	16 mm	16 mm
Maximum granule for spray	12 mm	12 mm
Conveying distance*	100 m	100 m
Conveying height*	40 m	40 m
Drive	400 V, 50 Hz	Diesel
Pumping motor	22 kW	26 kW/32,5 HP
Hopper content	240 l	240 l
Remote control	Pneumatic	Pneumatic
Vibrator	0,17 kW, 205 kg	12 V, 205 kg
Sieve with vibrator	12 or 16 mm	12 or 16 mm
Output coupling	2 ½"	2 ½"
Material hose	Ø 65 mm	Ø 65 mm
For spraying-pouring	Ø 50 mm	Ø 50 mm
Dimensions (L/W/H)	4750/2000/1600 mm	4750/2000/1600 mm
Total weight approx.	1340 kg	1380 kg

\* Depending on motor speed, mortar quality, composition and consistency; pump type and condition, diameter of the conveying hose, conveying height.

\* Consistency class: S4 (fluid). Slump range: 160-210 mm

#### FIELDS OF APPLICATION

For all pumpable ready-mixed wet mortars up to 16 mm granule size (up to 12 mm for spraying applications), such as:

- Tunnels
- Little hills
- Brae fixing
- Swimming pools
- Water parks
- Fountains
- Thermal springs
- Water decorations
- Rock cracks
- Artificial rock
- Artificial waterfall
- Curtain wall
- Panel building systems
- Fibre reinforced concrete spray

... and many more

#### STANDARD EQUIPMENT

- Robust trailer chassis
- Chemical additives tank, 500 litre
- Chemical additives dosage pump
- Pump unit 2 L 8 or 60/12 R
- Mortar pressure manometer 0-60 bar
- Power cable 5x4mm<sup>2</sup> 25 m CEE cpl. 32 A (EVP 18 S)
- Cleaning connection tool
- Mortar hose with coupling Ø 65 mm 10 m, 3 pieces
- Mortar hose with coupling Ø 50 mm 10 m
- Reduction coupling 65/50 mm
- Air hoses, 4 pieces
- Cleaning sponge balls Ø 60 mm and Ø 80 mm -
- Steel shotcrete spraying gun Ø 50 mm
- Polyurethane shotcrete spraying gun Ø 50 mm -
- High pressure cleaning machine
- Rotor dismantlement apparatus
- Manual grease pump
- Tool kit

## DRY SHOTCRETE MACHINE

**ASE TKS**



17

ASE TKS is an ideal pump what is designed to spray the dry mixtures with granule sizes up to 20 mm and operated according to time adjusted rotor principle.

It has a structure suitable for working under any site conditions thanks to its solid structure and body in compliance with international quality standards.

It's safely used in any dry system concrete spraying applications like tunnel, dam, road construction, slope stabilization and mining.

It has an easy-to-use structure thanks to its uncomplicated operating system.

Electrical control panel is secured, phase protected, thermal switched, direction controlled at IP 55 standards.



### TECHNICAL DATA

	ASE TKS
Theoretical spraying capacity*	7,5 m <sup>3</sup> /h
Practical spraying capacity*	6 m <sup>3</sup> /h
Rotor capacity	11 l
Maximum aggregate size	20 mm
Motor power	7,5 kW, 400 V, 50 Hz,
Electric driven vibrator	0,12 kW, 50 Hz, 62,5 kg
Air consumption	10-13 m <sup>3</sup> /min (at 6 bar)
Hose diameter	65/85 mm
Length	1550 mm
Width	1200 mm
Height	1300mm
Total weight approx.	625 kg

\* Practical conveying capacity can be 4-9 m<sup>3</sup>/h upon request.

\* Depending on aggregate, material characteristic, air pressure and machine maintenance condition.

### FIELDS OF APPLICATION

ASE TKS can be used for many different applications, such as:

- Concrete repair
- Rocks aping
- Refractory spraying
- Swimming pool construction
- Mine and tunnel linings
- Tunnels
- Little hills
- Brae fixing
- Swimming pools
- Water parks
- Fountains
- Thermal springs
- Water decorations
- Rock cracks
- Artificial rock
- Artificial waterfall
- Curtain wall
- Panel building systems
- Fibre reinforced concrete spray

... and many more

### STANDARD EQUIPMENT

- Special semi wet spraying attachment as ready for spraying
- Material hose Ø 65 mm 20 m
- Clamp 2,5"
- Coupling 2,5"
- Mixing unit
- Nozzle head 2,5"
- Nozzle





# ASE FPM 25

## ASE FPM 25 FC

**NEXT  
GENERATION**



18

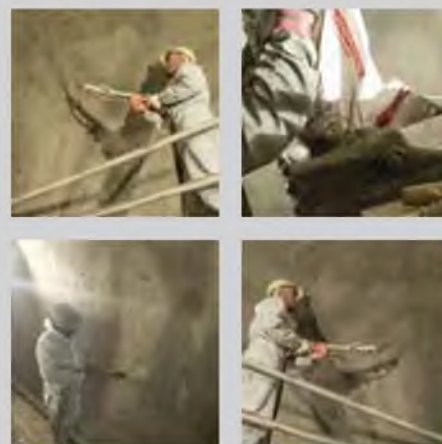
ASE FPM 25 is a new generation screw pump designed for fireproofing spraying applications. It's extremely easy to use as it's a more compact model compared to the fellow models.

Material is mixed more homogeneously and at a period of requirement thanks to its special spiral mixer design.

Pumping capacity can be changed at any time at any rate according to the requirement with FC (frequency converter) model alternative.

Air volume needed for spraying can be adjusted with specially designed guns for fireproofing spraying applications.

Furthermore, chemical additives can be entered in spray guns when required.



### TECHNICAL DATA

	ASE FPM 25	ASE FPM 25 FC
Pumping capacity*	35 l/min	0-35 l/min
With various pump*	6-70 l/min	0-70 l/min
Pumping pressure*	40 bar	40 bar
Conveying distance*	120 m	120 m
Conveying height*	50 m	50 m
Drive	400V, 50 Hz	400V, 50 Hz
Fuse protection	3x32 A	3x32 A
Pumping motor	5,50 kW	5,50 kW
Mixer motor	3,0 kW	3,0 kW
Compressor capacity	2,2 kW, 400 l/min, 8 bar	2,2 kW, 400 l/min, 8 bar
Remote control	Pneumatic	Pneumatic
Output coupling	1 1/2"	1 1/2"
Conveying hose	Ø 35 mm	Ø 35 mm
Loading height	1250 mm	1250 mm
Mixer capacity	100 l	100 l
Dimensions (L/W/H)	1850/740/1430 mm	1850/740/1430 mm
Compressor unit (L/W/H)	650/750/1200 mm	650/750/1200 mm
Total weight approx.	380+54 kg	380+64 kg

\* Depending on motor speed, mortar quality, composition and consistency, pump type and condition, diameter of the conveying hose, conveying height.

### FIELDS OF APPLICATION

For all vermiculite-based, cement-based or any dry pre-mixed fireproofing materials, such as:

- Spraying onto steel construction
- Petrochemical plants
- Shelter wall facing
- Warehouse wall facing
- Car park protection

... and many other applications for spraying fireproofing material are possible.

### STANDARD EQUIPMENT

- Pump unit 2 L 6 or 2 L 6 Plus
- Mortar hose Ø 35 mm 40 bar 13,3 m with couplings, 2 units
- Mortar hose Ø 35 mm 40 bar 13,3 m with swivelling coupling
- Mortar hose Ø 25 mm 40 bar 5 m with female coupling
- Air hose Ø 10 mm 45 m with GEKA-couplings
- Air hose Ø 10 mm 5 m with GEKA-couplings
- Reduction coupling VR 35/25 mm
- Spraying gun Ø 35 mm, nozzle 18 mm
- Fireproofing spray gun Ø 35 mm, Ø 25 mm, nozzle 12 mm
- Power cable 5x4 mm<sup>2</sup> 25 m CEE cpl. 32 A
- Cleaning sponge ball Ø 30 and 45 mm
- Hose cleaning apparatus via air
- Rotor dismantlement apparatus
- Manual grease pump
- Round file
- Tool box

# ASE FPM 35 FC

# ASE FPM 35 DH



19



ASE FPM 35 is a machine equipped by a rotor-stator system designed especially for mixing, pumping and spraying fireproofing materials.

With its special mixer design, the material is thoroughly mixed in the mixer in the needed time.

With the frequency converter, the pumping capacity can be adjusted in any rate any time according to the application requirement.

With the guns specially designed for fireproofing spraying applications, the air flow needed for spraying can be adjusted.

Moreover, when needed, the spraying gun can be equipped with a chemical additive inlet.

## TECHNICAL DATA

	ASE FPM 35 FC	ASE FPM 35 DH
Pumping capacity*	0-35 l/min	0-35 l/min
With various pump*	0-70 l/min	0-70 l/min
Pumping pressure*	40 bar	40 bar
Conveying distance*	120 m	120 m
Conveying height*	50 m	50 m
Drive	400 V, 50 Hz	Diesel
Fuse protection	3x40 A	-
Pumping motor	7,50 kW	4 cylinder
Mixer motor	3,0 kW	Hydraulic
Compressor capacity	2,2 kW, 400 l/min, 8 bar	400 l/min, 8 bar
Remote control	Pneumatic	Pneumatic
Output coupling	1 1/2" or 2"	1 1/2" or 2"
Conveying hose	Ø 35 mm	Ø 35 mm
Loading height	1250 mm	1250 mm
Mixer capacity	160 l	160 l
Dimensions (L/W/H)	2600/1360/1370 mm	2800/1360/1370 mm
Total weight approx.	690 kg	920 kg

\* Depending on motor speed, mortar quality, composition and consistency, pump type and condition, diameter of the conveying hose, conveying height.

## FIELDS OF APPLICATION

For all vermiculite-based, cement-based or any dry pre-mixed fireproofing materials, such as:

- Petrochemical plants
- Tunnels
- Spraying onto steel construction,
- Shelter wall facing,
- Warehouse wall facing,
- Car park protection,

... and many other applications for spraying fireproofing material are possible.

## STANDARD EQUIPMENT

- Pump unit 2 L 6 or 2 L 6 Plus
- Mortar hose Ø 35 mm 40 bar 13,3 m with couplings, 2 units
- Mortar hose Ø 35 mm 40 bar 13,3 m with swivelling coupling
- Mortar hose Ø 25 mm 40 bar 5 m with female coupling
- Air hose Ø 10 mm 41 m with GEKA-couplings
- Air hose Ø 10 mm 5 m with GEKA-couplings
- Reduction coupling VR 50/35 mm
- Reduction coupling VR 35/25 mm
- Spraying gun Ø 35 mm, nozzle 18 mm
- Fireproofing spray gun Ø 35 mm, nozzle 12 mm
- Power cable 5x4 mm<sup>2</sup> 25 m CEE cpl. 32 A
- Cleaning sponge ball Ø 30 and 45 mm
- Hose cleaning apparatus via air
- Rotor dismantlement apparatus
- Manual grease pump
- Round file
- Tool box
- Automatic Water Feed System (optional)

## ASE GRC 200 FC



20

ASE GRC 200 FC is a machine designed for pumping alkali-resistant fibreglass reinforced concrete mortars. It has technical properties to respond to every need for precast spraying applications.

It is mounted on a robust body. Thanks to its strong wheels, it can be easily moved in the operation site. With the boom connected to this body, mortar hoses and fibreglass can be easily moved during spraying, which facilitates the use of the spraying gun.

Since the pump system used in the machines is a progressive screw pump, the mortar can be conveyed in a more homogenous state and without any aggregation. This property of it makes the machine superior than those operated by a peristaltic pump system.

Thanks to its frequency converter, the pumping capacity can be adjusted in any rate any time according to the material requirement and the type of the application.

The sieve with vibrator enables the material to be applied in the specified standards.

On the control panel, all the necessary functions are designed for easier use. With a pneumatic control, the spraying gun can turn the pump on and off. Precise air controls can be set separately for each function and each has a separate manometer.

Its high capacity pump vessel is specially designed in an angle required for convenient material flow. The feed screw and the feed bunker provide efficient and economic operational conditions. Thereby, the machine can be easily cleaned at the end of the application.

### TECHNICAL DATA

	GRC 200 FC
Conveying capacity*	0-16 l/min
With various pump*	0-35 l/min
Conveying pressure*	30 bar
Air requirement	1800 l/min, 8 bar
Power supply	400 V, 50 Hz, 3-ph
Fuse protection	3x32 A
Pumping motor	5,50 kW
Fuse protection	3x25 A
Remote control	Pneumatic
Conveying hose	Ø 25 mm
Hopper content	80 l
Filling height	910 mm
Dimensions L/W/H	1570/970/2750 mm
Total weight approx.	400 kg



### FIELDS OF APPLICATION

For all pumpable glass fibre reinforced concrete mortars, such as

- Precast concrete
- With the concentric fibre gun, mixing the mortar-concrete in the gun and spraying
- Pumping the premixed fibre mixed with concrete
- With twin head guns, high-flow spraying
- Low-flow decorative mould casting

... and many more

### STANDARD EQUIPMENT

- Pumping unit D Series
- Special concentric spray gun
- Spray gun cleaning apparatus
- Mortar hose Ø 25 mm 10 m
- Air hoses 8 mm 11 m, 3 units
- Hose claw Geka-coupling GSK 19
- Hose clamp 28-34 mm SL 34
- Power cable 5x4 mm<sup>2</sup> 15 m CEE cpl. 32 A
- Glass fibre tray
- Extension boom
- Tool box

\* Depending on motor speed, mortar quality, composition and consistency, pump type and condition, diameter of the conveying hose.



# ASE GRC MIX 3

# ASE GRC MIX 5 FC



21



ASE MIX 3 and ASE MIX 5 are modern mixers designed to achieve the most suitable mortar admixture required for GRC applications.

Mixers with 60-litre capacity are suitable for easily mixing 125 kg GRC spraying mortars.

The materials are mixed homogeneously and at variable rates thanks to the ground-breaking design of the mixer blades.

Dry material loader and sealed cover significantly minimize the dust quantity.

MIX 3 model has double cyclic driver with 11,0 kW installed power mixing motor.

MIX 5 model is suitable for mixing at desired variable rate between 0-1400 rpm thanks to the frequency converter.

## TECHNICAL DATA

	GRC MIX 3	GRC MIX 5 FC
Mixing capacity*	60 litres (125 kg sand/cement slurry)	60 litres (125 kg sand/cement slurry)
Mixer motor	7,5/11,0 kW, IP55	11,0 kW, IP55
Mixer speed	Double speed 720-1440 rpm	Variable 0-1500 rpm
Power supply	400/415 V, 3 phase 50 Hz*	400/415 V, 3 phase 50 Hz*
Fuse protection	3x32 A	3x32 A
Mixing shaft diameter	240 mm	240 mm
Mixing blade	Special new design	Special new design
Air requirement	3,5 litre, 7 bar	3,5 litre, 7 bar
Mixer bucket	120 litre	120 litre
Dimensions (L/W/H)	1770/1300/2170 mm	1770/1300/2170 mm
Total weight approx.	340 kg	330 kg

\* Motors ratings and construction may vary with electrical supply requirements and local regulations.

\*\* Generator Supplies: If the electricity supply is from a generator, please consult ASE Inc.

## FIELDS OF APPLICATION

**With cement-based GRC materials, such as:**

- Thermal isolation plasters
- Pre-cast concrete mixture
- Pre-mixed fibre mixture with concrete
- Mixture of chopped fibre and precast concrete

**... and many more mixing applications.**

## STANDARD EQUIPMENT

- New generation mixing blades
- Mortar bucket 120 litre
- Power cable 5x4 mm<sup>2</sup> 25 m CEE cpl.
- Shifting spanner
- 6/125 screwdriver

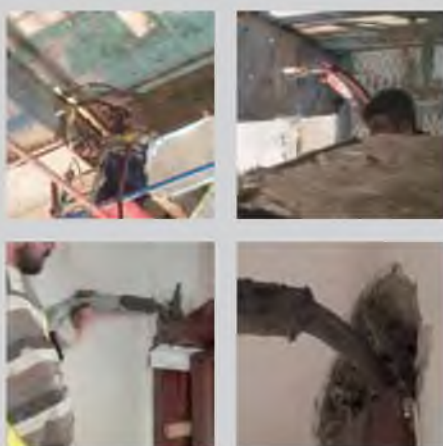
# ASE TEM 250

# ASE TEM 250 FC



**NEXT**  
GENERATION

22



ASE TEM 250 is a pre-mixed, extremely easy-to-use, practical screw pump designed especially for grout injecting applications.

It's possible to mix the material for a desired and required period of time as the mixer hopper is separate. Pump unit is designed under the mixer as an easy-to-use and solid frame.

It's possible to apply alternative screw pump options according to the pumping capacities of application types.

Pumping capacity in FC model can be adjusted at any time according to the application requirement with its frequency converter.

## TECHNICAL DATA

	TEM 250	TEM 250 FC
Pumping capacity*	35 l/min	0-35 l/min
With various pump*	6-55 l/min	6-35 l/min
Pumping pressure*	40 bar	25 bar
Conveying distance*	50 m	30 m
Conveying height*	30 m	20 m
Power supply	400 V, 50 Hz	400 V, 50 Hz
Fuse protection	3x32 A	3x32 A
Pumping motor	5,50 kW	5,50 kW
Mixer motor	3,0 kW	3,0 kW
Maximum granule	5-6 mm	5-6 mm
Output coupling	1 1/2"	1 1/2"
Conveying hose	Ø 25 mm	Ø 25 mm
Loading height	1150 mm	1150 mm
Dimensions (L/W/H)	1650/780/1200 mm	1650/780/1200 mm
Total weight approx.	340 kg	345 kg

\* Depending on motor speed, mortar quality, composition and consistency, pump type and condition, diameter of the conveying hose, conveying height.

## FIELDS OF APPLICATION

**For all pumpable cement or cement-based dry pre-mixed materials, such as:**

- Injection mortars
- Crack and hole filling
- Rock bolts filling
- Filling and connection mortars
- Anchorage applications
- Door and windows case fixing
- Borehole, pit filling
- Column bedplates
- Underground flooring

... and many more

## STANDARD EQUIPMENT

- Pump unit D Series
- Mortar hose Ø 25 mm 40 bar 20 m with coupling
- Mortar hose Ø 35 mm 40 bar 20 m with coupling, optional
- Power cable 5x4 mm<sup>2</sup> 25 m CEE cpl. 32 A
- Cleaning sponge ball Ø 30 mm, 2 pcs
- Rotor dismantlement device
- Tool box
- VR 35/25

# ASE DEP 200

# ASE DEP 200 FC

**NEXT**  
GENERATION



23

ASE DEP 200 is a new generation screw pump with rotor-stator system designed for grouting and grout injection applications.

It has a separate mixer that mixes the special grout mortars with single component or multi-components homogeneously for a required period of time through helical mixer system.

As it is a compact model, it's a productive pump which is extremely ease to use and perform maintenance and

Pumping capacity can be adjusted at desired rate according to the application requirement with FC (frequency converter) model.



## TECHNICAL DATA

	DEP 200	DEP 200 FC
Pumping capacity*	35 l/min	0-35 l/min
With various pump*	6-55 l/min	0-70 l/min
Pumping pressure*	40 bar	40 bar
Conveying distance*	50 m	50 m
Conveying height*	30 m	30 m
Power supply	400 V, 50 Hz	400 V, 50 Hz
Fuse protection	3x32 A	3x32 A
Pumping motor	5,50 kW	5,50 kW
Mixer motor	3,0 kW	3,0 kW
Power cable	5x4 mm <sup>2</sup>	5x4 mm <sup>2</sup>
Output coupling	1 1/2"	1 1/2"
Maximum granule	5-6 mm	5-6 mm
Conveying hose	Ø 35 mm	Ø 35 mm
Loading height	1250 mm	1150 mm
Dimensions (L/W/H)	1850/740/1430 mm	1850/740/1430 mm
Total weight approx.	395 kg	400 kg

\* Depending on motor speed, mortar quality, composition and consistency, pump type and condition, diameter of the conveying hose, conveying height.

## FIELDS OF APPLICATION

**For all pumpable grout mortars or cement-based ready-mixed mortars, such as:**

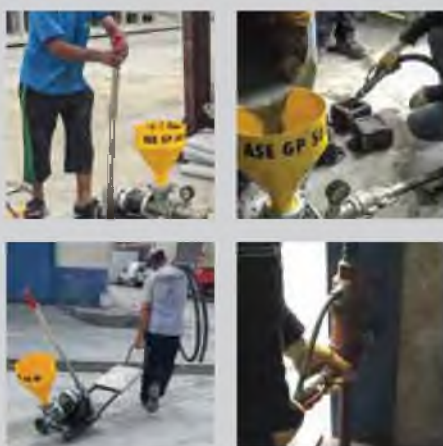
- Wind turbine foundations
- Turbine balances
- Anchorage applications
- Pavement stabilization
- Crack and hole filling
- Water insulation
- Cable and rock bolt fixings
- Concrete encasement
- Floor covering
- Marina underwater grouting
- Door/windows frame fixing
- Borehole, pit filling
- Column bedplates
- Underground flooring
- Concrete road embossing
- Bridge rehabilitation

**... and many more applications for grouting.**

## STANDARD EQUIPMENT

- Pump unit D Series
- Mortar hose Ø 25 mm 40 bar 20 m with coupling
- Mortar hose Ø 35 mm 40 bar 20 m with coupling, optional
- Power cable 5x4 mm<sup>2</sup> 25 m CEE cpl. 32 A
- Power cable 5x4 mm<sup>2</sup> 10 m CEE cpl. 32 A
- Cleaning sponge ball Ø 30 mm, 2 pcs
- Rotor dismantlement device
- Tool box
- VR 35/25





ASE GP 50 M is a portable, mobile, hand operated, positive displacement pulsating piston pump.

Its lightweight skid mounted design provides a perfect performance in small-scaled works. The 11 liter material holding hopper is connected directly to the suction of the pump for a continuous pumping operation.

ASE GP 50 M disassembles without any tools for a fast and efficient cleaning.

The pump comes complete and ready to use with a grout hose and a set of spare piston cups.

#### TECHNICAL DATA

	ASE GP 50 M
Pumping capacity*	7-10 l/min
Pumping pressure*	max. 10 bar
Pumping distance*	10 m
Power supply	Manual
Conveying hose	ø 25 mm 10 m
Pumping unit	3 ½" piston pump
Outlet diameter	1"
Hopper capacity	11 l
Loading height	670 mm
Dimensions (L/W/H)	1700/350/670 mm
Total weight approx.	72 kg

\* Depending on diameter of conveying hose, conveying distance, mortar consistency, piston stroke, mixture characteristics. Maximum output, line pressure and pumping distance cannot be achieved simultaneously.

#### FIELDS OF APPLICATION

For all pumpable grout mortars, such as

- Marine/underwater
- Door/window frames
- Piling encasements
- Rock bolting/soil anchors
- Hollow metal filling
- Precast tunnel joints
- Machine base grouting
- Void filling
- Waterproofing
- Slab raising
- Pipe jacking slurry
- Mining grout applications

... and many more

#### STANDARD EQUIPMENT

- Material hose
- Piston check valve balls
- Cleaning balls
- Toolbox

## ASE ALP 130

**NEXT  
GENERATION**



25

ASE ALP 130 is a volumetric screw airless pump that operates with high pressure.

With the new ASE ALP 130 Airless, almost all pasty materials are easily pumped and spraying applications are applied to walls and ceilings.

The pumping capacity and operating pressure range are easily adjusted through potentiometer when desired.

Owing to the fact that a valveless pump is used in the machine, it's simple and easy to operate and maintain. Its stainless steel hopper provides durability and ease of cleaning.



### TECHNICAL DATA

	ASE ALP 130
Pumping capacity*	0-7 l/min
Pumping pressure*	max. 130 bar
Pumping distance*	25 m
Power supply	230 V, 50-60 Hz
Pumping motor	3,0 kW
Material hose	ø 10 mm 20 m
Spraying gun	ALP 962 nozzle 0,045"
Pumping unit	ASEALPS 308 airless
Electric cable	3x2,5 mm <sup>2</sup> 10 m
Noise level	89 dB
Bunker capacity	75 l approx. 2,5 bags
Loading height	710 mm
Dimensions (L/W/H)	1500/550/740 mm
Total weight approx.	165 kg

\* Depending on mortar quality, mortar composition, mortar consistency, pump type and condition, diameter of conveying hose, conveying height. Maximum pumping capacity, line pressure and pumping distance cannot be simultaneously. The directives recommendations of the material producer are to be observed.

### FIELDS OF APPLICATION

**For all pumpable pasty, liquid and filler material, on drywall construction, concrete areas and plaster surfaces, such as:**

- Spray plaster
- Satin plaster
- Smoothing plaster
- Decorative plaster
- Joint filler
- Color

... and many more

\* For some applications, additional accessories may be required.

### STANDARD EQUIPMENT

- Rotor ASEALPS airless 308
- Stator ASEALPS airless 308
- Material hose ø 10 mm 20 m with couplings
- Electric cable 5x2,5 mm<sup>2</sup> 20 m
- Spraying gun
- Spraying nozzle
- Toolbox

					
Spray gun Ø 25 mm, long, straight	Spray gun Ø 25 mm, ext. long, angled	Spray gun Ø 25 mm, long, straight	Spray gun Ø 25 mm, long, straight	Spray gun Ø 25 mm, ext. long, angled	Spray gun Ø 35 mm, short, straight
					
Spray gun Ø 35 mm, short, angled	Spray gun Ø 35 mm, long, angled	Spray gun Ø 35 mm, ext. long, angled	Fine Spray gun Ø 25 mm	Fine Spray gun Ø 25 mm, long	Injecting gun Ø 25 mm
					
Fireproofing spray gun Ø 25 mm, straight	Shotcrete spray gun, PU Ø50/65 mm	Shotcrete spray gun, Steel Ø50/65 mm	GRC spray gun	GRC Twin spray gun	Masonry-Door frame grouting guns
					
Spray nozzles for Ø 25 mm, 8-14 mm	Spray nozzles for Ø 35 mm, 16-24 mm	Mixing shaft SM 5	Cleaning tube-shaft	Stator clamp 2LG-pumps	Pumping unit tie studs
					
Shotcrete rubber plates and nozzle	Output flange	Water flow meter 150-1,500 l/h	Mixer motor coupling	Pressure switch FF4-4 0,22-4 bar	Rotors & Stators
					
Quick tense connector	Compressor Handy K2	Compressor spare parts	Mortar hoses, with couplings	Cleaning sponge balls	Air hoses, 10 mm
					
Water hose 25 mm, with check valve	Power cable 5x4 mm², 32 A	Mortar hose couplings	GEKA Claw couplings	Mortar hose clamps	HSP rubber piston and balls
					
Mixing spiral scrapers	VP Conveyor screw and coupling	Leak proofing seals, PU	Clamp coupling 2 1/2"	Mortar mixing paddles	Piston checkvalve balls, PU



# ASE ROTOR-STATOR PROGRAMME



Type	Colour	Capacity	Capacity	Grain Size	Pumping Pressure	Dimensions	Rotor Length
		(l/min at 400 rpm)	(l/min at 200 rpm)				
D 4-1/4	Black	7	3	2	70	270/89	320
D 4-1/2	Grey	13	6	3	55	270/89	320
D 4-60	White	20	10	3	40	270/89	320
D 4-64	Blue	21	10	4	40	270/89	320
D 4	Green	22	11	5	40	270/89	320
D 5-2,5	White	22	11	5	60	270/89	320
D 6-2	Orange	20	10	3	20	200/89	250
Turbo Power	Turquoise	27	13	4	50	270/89	320
D 6-3	Orange	22	11	4	55	270/89	320
D 6-3 Turbo	Silver	25	13	4	50	270/89	320
D 7-2,5	White	25	13	4	70	270/89	320
D 8-1,5	Green	35	17	6	30	270/89	320
D 8-2	Black	35	17	5	40	270/89	320
2 L 6	Yellow	70	35	8	25	535/101	620
2 L 6 Plus	Yellow	140	70	10	25	535/101	620
2 L 7	Black	80	40	8	15	535/127	620
2 L 88	Grey	102	56	10	20	535/101	620
2 L 74/60-12	Orange	220	110	10	30	535/127	620
SP	Yellow	280	140	12	30	500/146	570
2 L 8	Orange	560	280	16	25	650/194	740
1,5 L 8	Yellow	560	280	16	10	650/194	740
R 7-3	Orange	120	60	8	45	535/114	620
R 7-1,5	Yellow	120	60	4	25	270/114	320
Ü 356	Yellow	150	75	8	30	535/127	620
Ü 356 1/2	Yellow	150	75	8	20	270/127	320
Ü 356-0,75	Green	100	50	4	60	535/127	620
50/7 R	Red	70	35	5	50	535/101	620
60-12 R	White	225	113	8	30	535/127	620
45/7 R 2	White	60	30	5	60	535/101	620

Алматы (7273)495-231  
Ангарск (3955)60-70-56  
Архангельск (8182)63-90-72  
Астрахань (8512)99-46-04  
Барнаул (3852)73-04-60  
Белгород (4722)40-23-64  
Благовещенск (4162)22-76-07  
Брянск (4832)59-03-52  
Владивосток (423)249-28-31  
Владикавказ (8672)28-90-48  
Владимир (4922)49-43-18  
Волгоград (844)278-03-48  
Вологда (8172)26-41-59  
Воронеж (473)204-51-73  
Екатеринбург (343)384-55-89

Иваново (4932)77-34-06  
Ижевск (3412)26-03-58  
Иркутск (395)279-98-46  
Казань (843)206-01-48  
Калининград (4012)72-03-81  
Калуга (4842)92-23-67  
Кемерово (3842)65-04-62  
Киров (8332)68-02-04  
Копломна (4966)23-41-49  
Кострома (4942)77-07-48  
Краснодар (861)203-40-90  
Красноярск (391)204-63-61  
Курск (4712)77-13-04  
Курган (3522)50-90-47  
Липецк (4742)52-20-81

Магнитогорск (3519)55-03-13  
Москва (495)268-04-70  
Мурманск (8152)59-64-93  
Набережные Челны (8552)20-53-41  
Нижегород (831)429-08-12  
Новокузнецк (3843)20-46-81  
Ноябрьск (3496)41-32-12  
Новосибирск (383)227-86-73  
Омск (3812)21-46-40  
Орел (4862)44-53-42  
Оренбург (3532)37-68-04  
Пенза (8412)22-31-16  
Петрозаводск (8142)55-98-37  
Псков (8112)59-10-37  
Пермь (342)205-81-47

Ростов-на-Дону (863)308-18-15  
Рязань (4912)46-61-64  
Самара (846)206-03-16  
Санкт-Петербург (812)309-46-40  
Саратов (845)249-38-78  
Севастополь (8692)22-31-93  
Саранск (8342)22-96-24  
Симферополь (3652)67-13-56  
Смоленск (4812)29-41-54  
Сочи (862)225-72-31  
Ставрополь (8652)20-65-13  
Сургут (3462)77-98-35  
Сыктывкар (8212)25-95-17  
Тамбов (4752)50-40-97  
Тверь (4822)63-31-35

Тольятти (8482)63-91-07  
Томск (3822)98-41-53  
Тула (4872)33-79-87  
Тюмень (3452)66-21-18  
Ульяновск (8422)24-23-59  
Улан-Удэ (3012)59-97-51  
Уфа (347)229-48-12  
Хабаровск (4212)92-98-04  
Чебоксары (8352)28-53-07  
Челябинск (351)202-03-61  
Череповец (8202)49-02-64  
Чита (3022)38-34-83  
Якутск (4112)23-90-97  
Ярославль (4852)69-52-93

Россия +7(495)268-04-70

Казахстан +7(7172)727-132

Киргизия +996(312)96-26-47

<https://ase.nt-rt.ru/> || [aej@nt-rt.ru](mailto:aej@nt-rt.ru)